

Zedi Vital™

Field Data Management System



View and share all aspects of production from one application

Zedi Vital is an advanced field data capture system where data from oil and gas production and processing facilities is collected, input and analyzed using Zedi's purpose-built software. This information is then made available to all authorized users through Zedi's secure web application.

Zedi Vital gives you an accurate view to production versus budget numbers for everyone who has a vested interest in managing production operations - from the operator to the executive suite to the production accountant. Zedi Vital brings all of your critical information to one spot so people can rely on one data source to make better and more effective decisions.

Zedi Vital:

- *Helps you report and meet your production targets by removing silos of information within your organization by providing one source of consistent, accurate data.*
- *Gives a clear view of your net and gross production numbers, and your working interests.*
- *Is web-based and can work on dial-up connectivity.*
- *Allows universal access to all authorized users increasing collaboration and information sharing among colleagues.*
- *Auto-populates data seamlessly into disparate systems like SCADA, marketing, budget or production accounting applications.*
- *Makes it easy for operators to input data and qualitative notes on tank levels at the battery.*

Well Tests By Battery				
Formatted UWI	Test Date	Total Fluid	BSW Cut Water	BSW Cut Sand
91/05-10-006-04W5/0	Apr 02, 2008	20.74	40.00	0.00
91/09-16-012-04W1/0	Apr 04, 2008	18.24	19.00	0.00
91/09-16-012-04W1/0	Apr 10, 2008	22.00	9.00	0.00

Page 1 of 1 04-16-2008

Note: UWI's are not real and used only for illustration



zedi

Zedi Vital™

Zedi Vital provides timely and accurate data through a secure web application. Don't worry about having a time lag on the data – know what your production is today and monitor your uptime and cash flow.

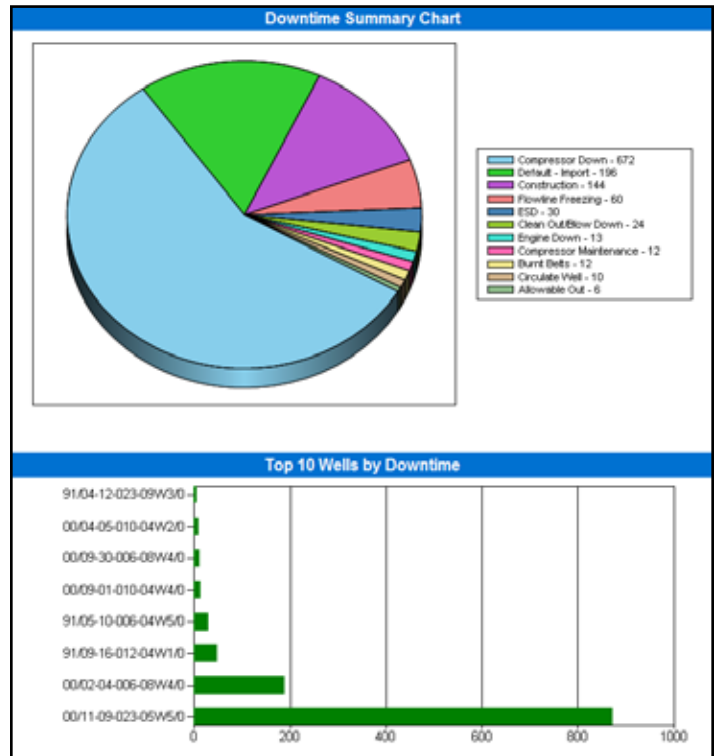
Improve operational efficiencies

Best practice reports include:

- **Production summary** to know where your production targets are at
 - production, 7-day averages, % oil versus gas, etc.
- **Downtime summary** to analyze downtime reasons to help with optimization decisions
 - shows top 10 wells in pie or bar charts
- **Well tests by battery** to see trends and when last test was done

How existing Zedi customers will benefit:

- Zedi Vital enables seamless data synchronization from the field (measurement, volumetrics, etc., from both oil and gas operations) to Zedi's PetroNet production accounting application.
- Zedi's measurement web application (Zedi Access™) integrates data through to the Zedi Vital application ensuring data accuracy directly from the wellhead to the registry.



Field Production Data Capture -- Zedi

[Administration](#) [Production](#) [Reporting](#) [Home](#) [Logout](#)

Production Summary from Apr 1, 2008 to Apr 16, 2008

Categories

[Audit](#)

[Production](#)

[Production Accounting](#)

[Well Information](#)

[Report Catalogue](#)

Product Mix:

Oil: 43.96% Gas: 56.04%

Average WI:

Oil: 62.15% Gas: 53.97% All: 57.28%

[Drill Down](#)

	Field	Forecast	BOE/d	Corporate %	Forecast Variance %	2 Weeks Ago	Last Week	BOE/d Change	Variance %
Select	Alberta Mixed	165.0	269.5	37.8	63.3	368.5	176.0	-192.5	-52.2
Select	East Alberta Oil	200.0	100.3	14.1	-49.9	170.7	2.0	-168.7	-98.8
Select	North Alberta Gas	456.0	343.4	48.1	-24.7	486.6	100.7	-385.9	-79.3



500, 600-6th Avenue S.W.
Calgary, Alberta T2P 0S5

Toll free: 1.866.732.6967
www.zedi.ca

