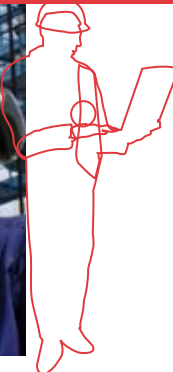


Smart-Skid™

Permanent Metering Facility



- "Plug and play" metering facility
- Half day surface facility construction
- Reduced footprint
- Smart-Alek® equipped
- eTube™ equipped



zedi

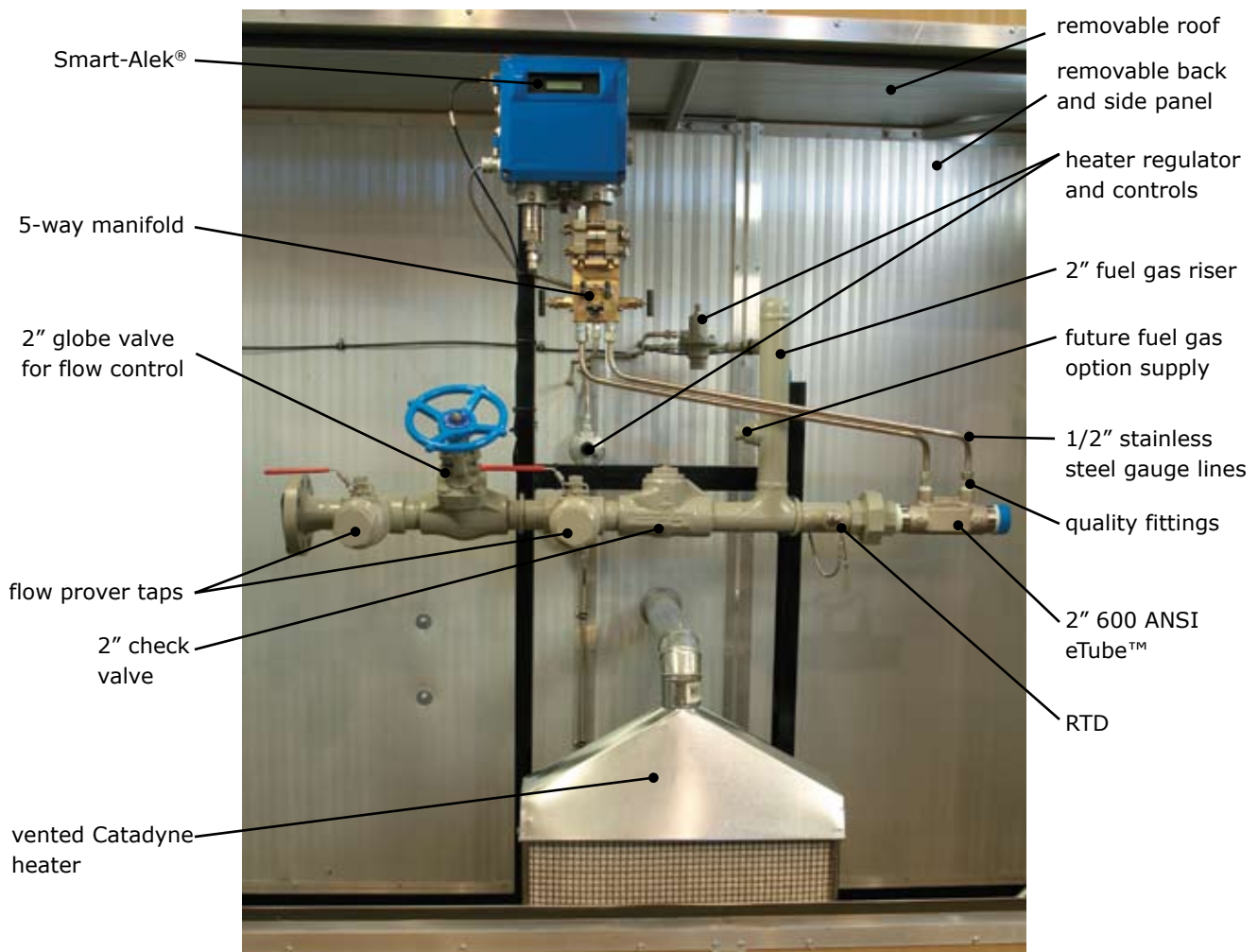
Smart-Skid™ – Permanent Metering Facility

Smart-Skid, Zedi's "plug and play" metering facility, reduces surface facility construction time by up to one third. Each facility is equipped with a Smart-Alek® electronic flow measurement system, and an eTube™ to deliver stabilized differential pressure in a wide range of flows.

Improve accuracy and accountability while lowering costs and increasing earnings:

- Reduce the installation footprint, costs and overall environmental impact of your meter facility
- Reduce the need for road access and associated maintenance costs by using Smart-Alek
- Increase overall earnings through less pressure loss, enabling greater gas flow in certain low-pressure applications

Hardware Capabilities:



- Standard skid size – 48" (W) x 110" (L) x 75" (H), skid mounting plate adds 18" in length
- Steel c-channel frames – 3" vertical, 4" bottom, 6" cross frame
- Built to ASME 31.3 standards
- Wellhead and sales line can be enclosed in skid
- Can be designed to specific facilities specifications

eTube™

Due to its streamlined shape, eTube produces a stable differential pressure over a wide range of flow rates.

- Large turndown ratio when used in conjunction with Smart-Alek®
- Eliminates need to change orifice plate to accurately measure gas
- Typically only one or two eTube changes over the entire well life cycle

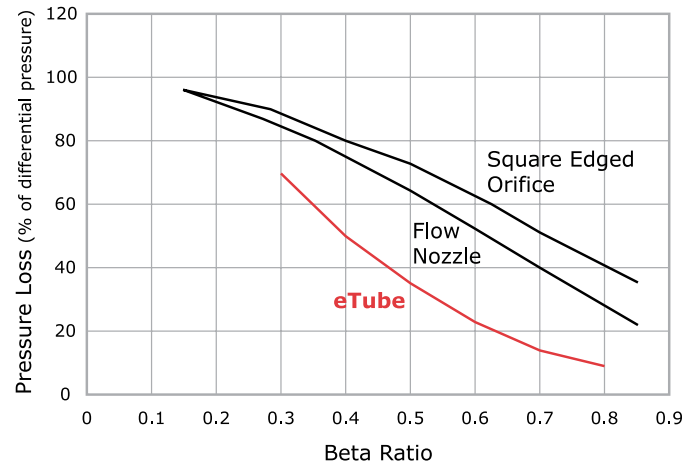
eTube Specifications

Types of Flow Measured	: Gas
CD ¹ Uncertainty	: ± 0.5%
Repeatability	: ± 0.1%
Turndown	: 10:1 typical, can be up to 20:1
Pressure Safety Approval	: CRN: 0F6747.2C
MAWP ²	: 600 ANSI (1440 psi)
Pipe Size	: 2" (Schedule 40 or Schedule 80)
End Connections	: 2" NPT Male : 2" ANSI 600 Flanged
Pressure Tap	: 1/2" NPT Female
Material	: F316 Stainless Steel
Weight	: 2" NPT Male - 4 kg : 2" Flanged - 11.75 kg
Standard Beta Ratio	: 0.3, 0.4, 0.5, 0.6, 0.7
Operating Temperature	: -40 to 150° C

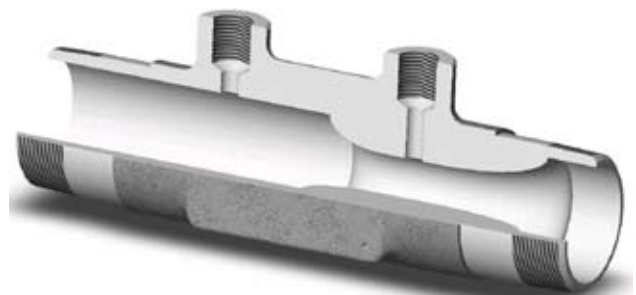
¹ Coefficient of Discharge

² Maximum Allowable Working Pressure (MAWP) over operating temperature range

Permanent Pressure Loss Comparison as a Percentage of Change in Pressure



2" NPT Threaded eTube
(also available with flanged end connection)

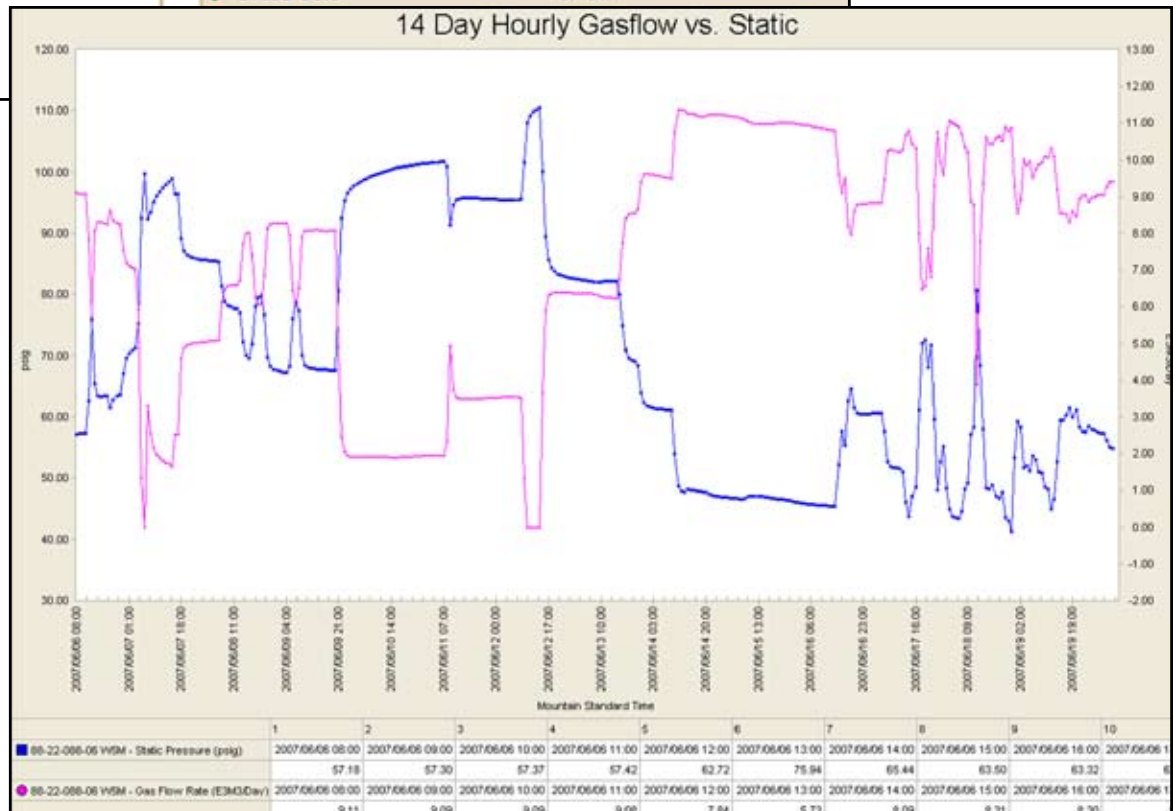


eTube Drawing
(cutaway)

Web-based Application

The screenshot shows the Zedi Access web application interface. On the left is a tree view for well selection, organized by field (Field One, Field Two, Field Three, Field Four). The well '102/02-12-057-17 W5M' is selected. The right panel displays the well's details, including its name, status (Online), and various sensor readings such as Flowing Temperature, Differential Pressure, Internal Temperature, Tubing Pressure, Pipeline Pressure, Condensate Volume, and eTube beta. A 'Notifications' section is also visible.

Zedi Access
 (formerly Smart-Alek.com)
 Web-based interface
 allows for easy viewing
 and electronic transfer of
 production data gathered
 by Smart-Alek® at the
 well.



Zedi Access (formerly smart-alek.com)
 Graphing and reporting capabilities



zedi

500, 600-6th Avenue S.W.
 Calgary, Alberta T2P 0S5

Toll free: 1.866.732.6967
 www.zedi.ca

