



## Autonomously Advance Your Rod Pump Production

### **Zedi Autonomous Rod Pump Management**

Increase your profits and sustainability with advanced analytics, machine learning and artificial intelligence for smarter rod pump management.



# Increase Your Remote Well Performance and Safety with Reduced Operational and Workover Costs

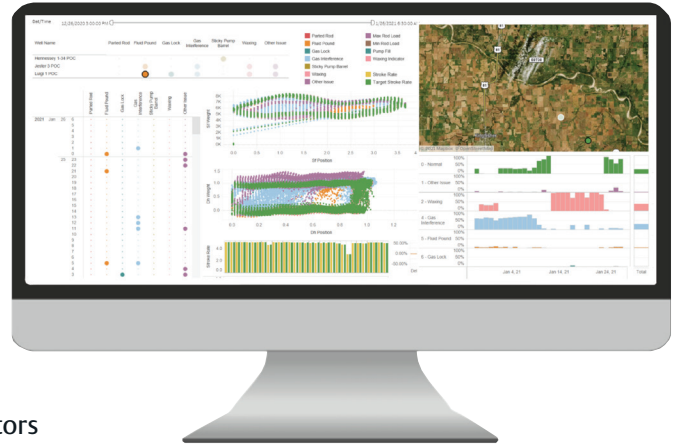
Remote well locations often divert your operational personnel from more strategic goals due to the time, safety hazards and cost of traveling to distant, isolated well sites while quickly absorbing profits with easily avoidable workover costs.

As a result of climate induced asset challenges and transportation barriers your wells are typically not performing in an optimal state with reduced frequency of site-visits, often resulting in unintended and lengthy shut-ins.

Regular well site visits and avoidable workovers are beginning to become a burden of the past. What was once required by operators to monitor production data and make appropriate adjustments to the equipment to alleviate or prevent problems or workovers and to ensure the operations are optimized for revenue, reservoir depletion, and equipment protection is moving closer to being done autonomously.

Emerson's Zedi Autonomous Rod Pump Management protects production, profits and sustainability with our cloud-based web interface, as well as the ability to push data to third party platforms, allowing remote control and optimization via cloud data access from anytime, anywhere.

Discover how our cloud-based analytics will help you on your digital transformation journey to autonomous operations.

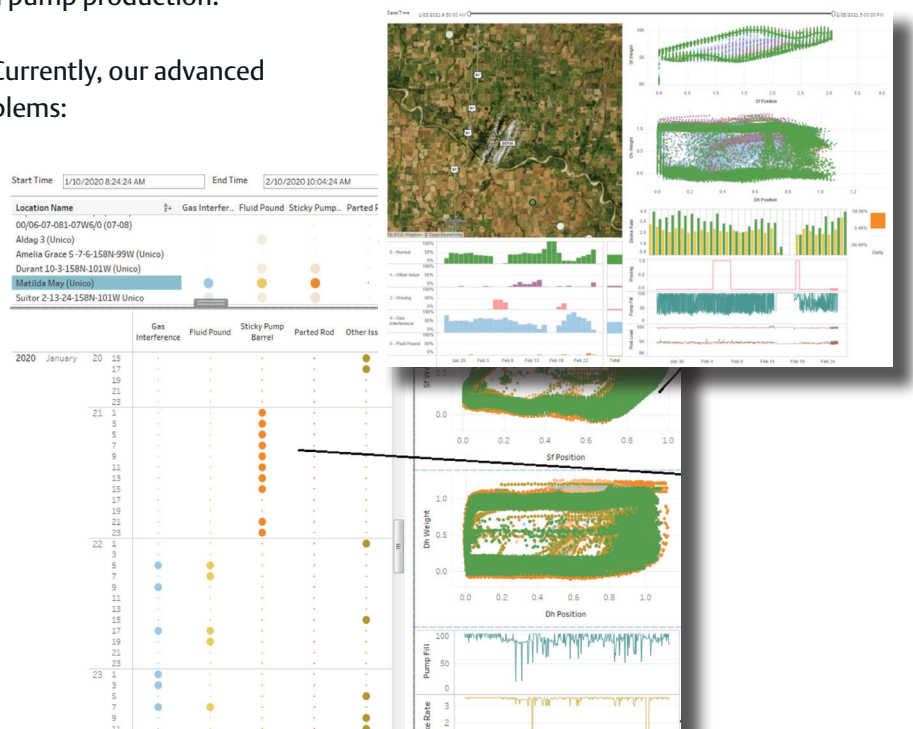


## Autonomous is Accelerating Every Day

Artificial Intelligence (AI) and advanced analytics are able to easily digest and analyze the vast amounts of big data that your remotely located rod pumps produce and challenge you with through their life cycle. Today, those advanced analytics available through our cloud-based platform have teamed with our AI and Machine Learning (ML) strength and is able to present and even action upon the successful, learned historical data to save on your maintenance costs, and grant you longer sustainability of your rod pump production.

Development is quickly gaining momentum. Currently, our advanced analytics identify the following rod pump problems:

- Fluid Pounding
- Gas Interference
- Gas Lock
- Parted Rods
- Sticking Pump Barrel
- Waxing
- Sanding



# Focus on Your Business, Not Your Platform

Our evergreen, cloud-based platform provides scalable and easily expandable advanced capabilities to your rod pumps in remote locations, while also offering you visibility and control to your ESP, PCP, pumpjack or plunger lift that shows current movement with tilt sensor, casing pressure, flowing temperatures, ambient temperatures, voltage and alarms if things go wrong.

- Increase safety and productivity
- Reduce site visits & downtime

From one artificial lift to multiple in a single location, all serviced by the same efficient communications assembly that can deliver the data you need to analyze the decline curve and increase your operational production, profits and sustainability.



## Software as a Service



Unlock the most value from your data with our SaaS cloud-based solutions.

Easily and seamlessly access current, user-friendly data for real-time, accurate decision-making safety gains. Our software applications are built for operations and are delivered as a service to ensure evergreen enhancements, secure storage and full support. Increase operational excellence with our software solutions for better performance, stronger safety and streamlined compliance.

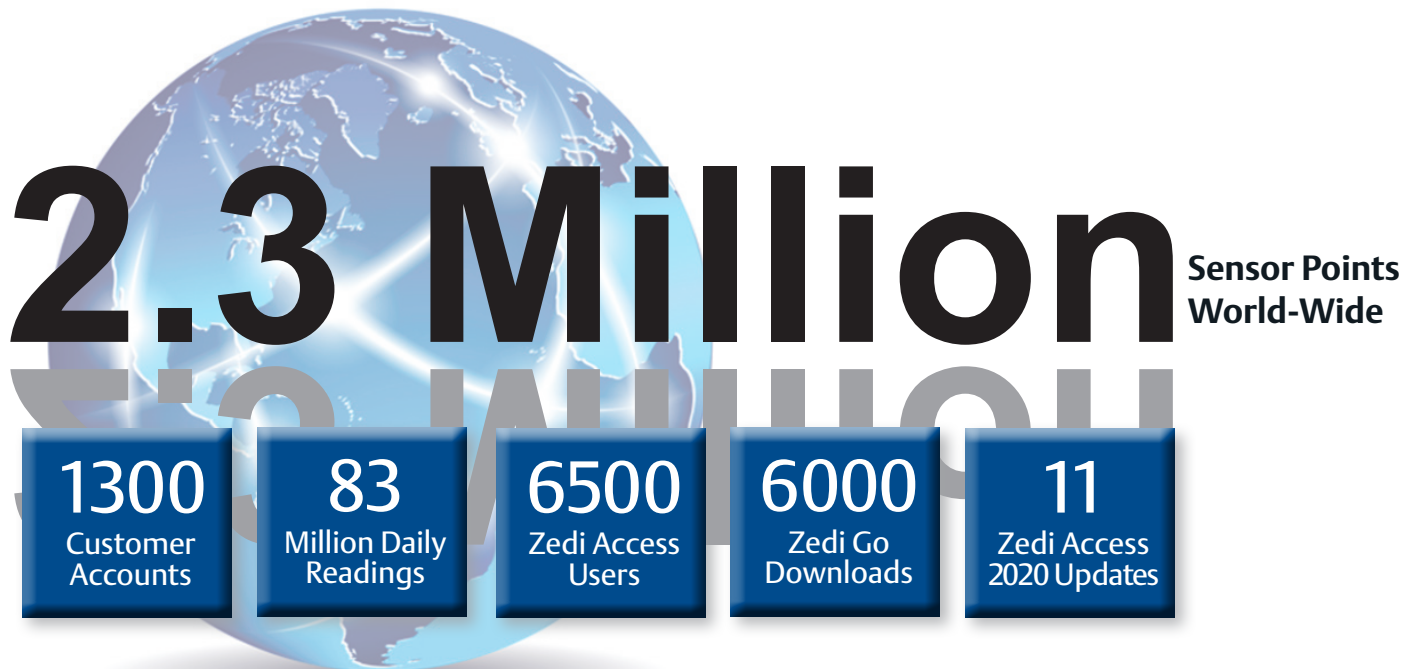
### Acquire, manage, and analyze your operational data while ensuring safety

- Unlimited users, no seat or site licenses required
- 24/7/365 customer support
- Evergreen upgrades
- User training
- Anytime, anywhere access
- Proven data center
- Business continuity
- Infrastructure management



Learn more online at: [www.Emerson.com/RemoteAutomation](http://www.Emerson.com/RemoteAutomation)

Digitally transform your production operation by integrating a secure, scalable, end-to-end cloud platform and software as a service solution.



**North America and Latin America**

Global Headquarters  
Emerson Automation Solutions  
Remote Automation Solutions  
6005 Rogerdale Road  
Houston, TX, USA 77072  
T: +1 281 879 2699

**Europe**

Emerson Automation Solutions  
Remote Automation Solutions  
Unit 1, Waterfront Business Park  
Dudley Road, Drierley Hill  
Dudley, UK DY5 1LX  
T: +44 1384 487200

**Middle East and Africa**

Emerson Automation Solutions  
Remote Automation Solutions  
Emerson FZE  
PO Box 17033  
Jebel Ali Free Zone - South 2  
Dubai, UAE  
T: +971 4 8118100

**Asia Pacific**

Emerson Automation Solutions  
Remote Automation Solutions  
1 Panda Crescent  
Singapore 128461  
T: +65 6777 8211

[www.Emerson.com/RemoteAutomation](http://www.Emerson.com/RemoteAutomation)

- Facebook/Emerson-Automation-Solutions
- Remote Automation Solutions Community
- @Emerson\_RAS
- Remote Automation Solutions

© 2021 Emerson. All rights reserved.

The Emerson logo is a trademark and service mark of Emerson Electric Co. All other marks are the property of their respective owners. The contents of this publication are presented for information purposes only, and while every effort has been made to ensure their accuracy, they are not to be construed as warranties or guarantees, express or implied, regarding the products or services described herein or their use or applicability. All sales are governed by our terms and conditions, which are available on request. We reserve the right to modify or improve the design or specifications of our products at any time without notice. Responsibility for proper selection, use and maintenance of any product remains solely with the purchaser and end user.



CONSIDER IT SOLVED™