

A woman with dark, curly hair is looking down at a laptop screen. She is wearing a grey blazer over a dark blue button-down shirt and a gold necklace with a small pendant. The background is blurred, showing what appears to be an office or industrial setting.

## Increase Operational Efficiencies with Cloud-Based Data & Analytics

### **DeltaV™ SaaS SCADA**

Effortlessly integrate data from any source to rapidly enable better business decisions while increasing safety, production, profits and sustainability.

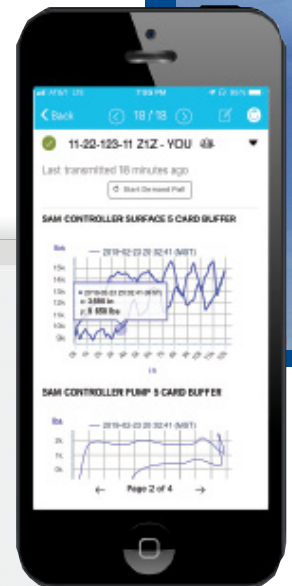
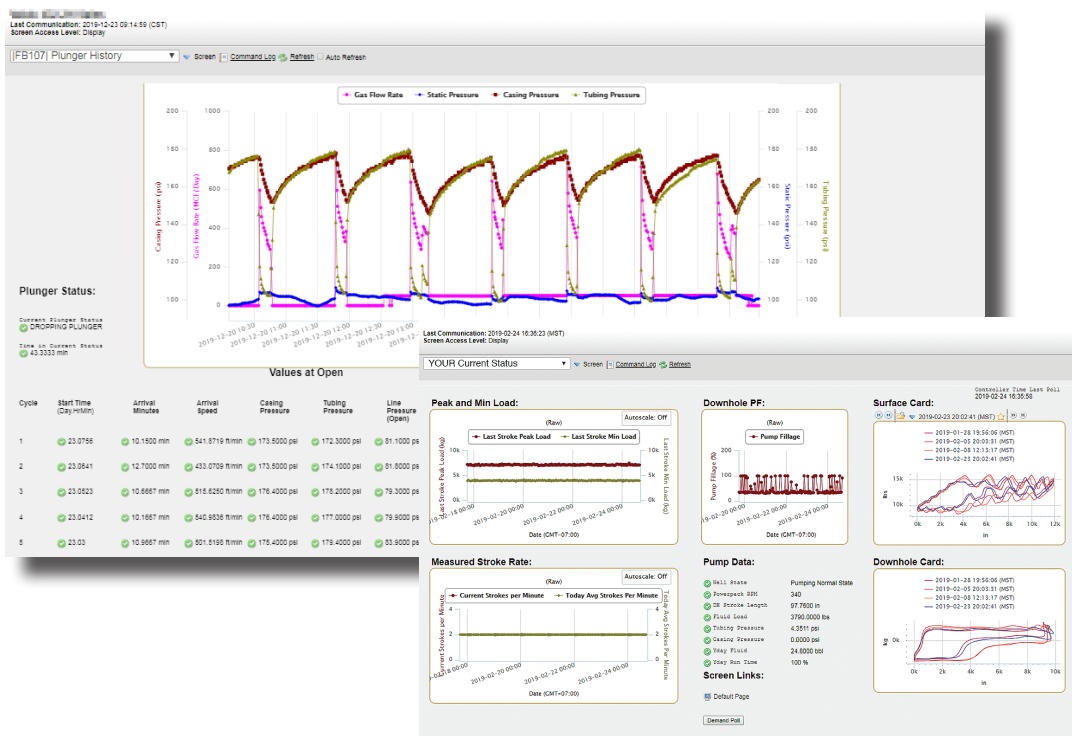
**DELTA**V™



**EMERSON**™



# Gaining remotely located asset data is just the beginning, it's what you can do with all that rich data that really matters



The Global Datasphere will grow from 33 Zettabytes in 2018 to 175 Zettabytes by 2025\*



Over 50% of businesses report that they have too much data to be able to analyze it efficiently, and 44% report that they could do a better job at analyzing their data.\*\*



\*<https://www.seagate.com/files/www-content/our-story/trends/files/idc-seagate-dataage-whitepaper.pdf>

\*\*Strategy Analytics IoT 2016 Deployment and Trends Usage Survey



**Deliver better business decisions based on vivid data analytics securely delivered to your authorized users at anytime, anywhere to operate more efficiently.**

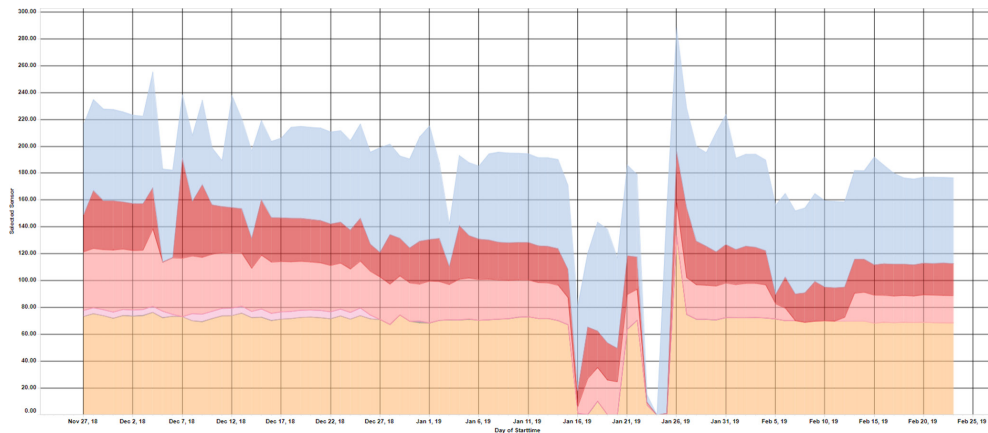
## **Trend and report operational data to discover potential best-practice opportunities**

Your entire operations, including remote assets with limited access can be easily managed to gain insights on air quality, energy and water management, ecological footprints, HSE and more. Quickly gain analyzed data that presents you with opportunities for ESG (environmental, social and governance) improvement opportunities to make a large, positive impact on your business, and the communities in which we all work, live and play.

## **Safely gain quick and easy solutions to even your most difficult industrial challenges**

Our intuitive, scalable and always up to date cloud based software as a service was built to take on the industrial challenges you face everyday and to fully support any digital monitoring hardware, with many options of communications for operational data and analytics with an aggregated view, mobile app, cry-out alarms and advanced security for remote control and monitoring at anytime, anywhere for your authorized users.

## Rapidly realize your operations potential through detailed cloud analytics & mobility.



Getting end-to-end operational data in real time from every sensor is the key to optimizing your operations. Provide your staff with secure, real-time, easy-to-read operations data – anytime, anywhere that drives stronger business decisions at every level.

Emerson's secure, scalable DeltaV™ SaaS SCADA enables operators around the world to compile data from any digital monitoring hardware via gateways that support a variety of protocols. We provide end users with a web interface, as well as the ability to push data to third party platforms, allowing remote control and optimization via authorized, cloud-based data access.

Discover how we will help you easily understand big data with vivid analytics with greater mobility.







**Reduce the time your staff spends traveling to and from remotely located assets with real-time visibility to levels, pressures, temperatures and more.**

## **Effortless, always up to date software enables you and your people to better focus on more impactful business decisions**

Our platform is built for anything under the industrial sun. You may decide to layer our SaaS SCADA onto your own current system to help make your team more mobile, as a secondary system for a transitional time-frame until your people are comfortable using a new system, or even as a secondary back-up to add another layer of security in the event your in-house system fails.

## **Our SaaS is hardware agnostic, meaning you can utilize the hardware you already own, and get decision making data**

You decide on what sensors, devices and hardware equipment are best suited for your situation. Just tell us what you want for detailed data and analytics to be reported and we'll do the rest—in just a few days. Your people will get the insights they need to make better operating decisions quickly & efficiently while increasing safety, production, sustainability & profits.

## Focus on your business, not your platform



Anywhere, anytime access to your operational data to increase safety, uptime and profitability. Clear and easy to understand real-time data provides visibility and minimizes manual operational tasks while driving robust safety processes.

User-friendly, accurate cloud data is available only to authorized users to better communicate across your organization; from remote locations to the main office, and everywhere in-between.



## Control & optimize with secure, cloud-based data access

- Unlimited authorized user, role-based access
- Anytime, anywhere access with the mobile app
- Optimize operations with cry-out alarms
- Effortless, always up to date software
- Easily push data to third party platforms
- Maintain business continuity with 24/7/365 support
- Up-skill your staff with user training, workshops & courses





Ensure your authorized users have easy access to actionable data to improve decision making and maintain operational continuity across your organization.

## **Flexible & proven IIoT platform engineered & developed in the cloud for secure operations**

From one location to multiple sites across the globe, our agile solution provides the flexibility to quickly and easily add newly acquired locations at any time. We provide end users with a web interface, as well as the ability to push data to third party platforms, allowing authorized, secure remote control and optimization via cloud-based data access.

## **Unlock the most value from your data with our SaaS cloud-based solutions**

Our software applications are built for operations and are delivered as a service to ensure you always have the latest enhancements, security, full 24/7 support and user training. Alarming at designated set-points notifies you, and authorized people when thresholds are met to increase safety and return.

## **Mobile app built for your industrial operational data for anytime, anywhere access**

Enter, monitor & manage your operational data with vivid reporting and trending that enable your operation to increase efficiencies and eliminate costly, and time consuming trips to remote sites. Create custom mobile forms to eliminate manual paperwork, automatically push data to other systems, and prioritize work based on alarms.

## **Security is everything - We offer a variety of secure communication options**

Your DeltaV SaaS SCADA data is stored within a Relational Database Management System (RDBMS) without an internet facing surface. Full data backups occur nightly, and storage amounts are not limited, nor quota driven with zero limitations on content or data with 'always-on' continuous security monitoring.



## Accurate asset data that's easily accessible to your authorized users anytime, anywhere

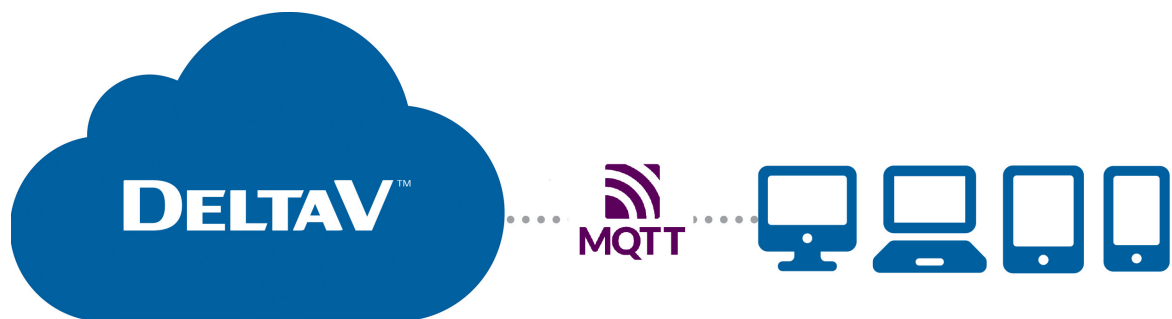
Secure, scalable Zedi SaaS SCADA in combination with wireless transmitters and gauges compile your asset data via gateways that support a variety of protocols.



- Wide variety of secure communication options with cellular and satellite providers
- Connections are encrypted & secured from the communication device back to the secure cloud-native DeltaV™ SaaS SCADA platform through dedicated APNs (Access Point Names) and VPNs (Virtual Private Networks)
- Full data backups occur nightly, and storage amounts are not limited, nor quota driven with zero limitations on content or data fields with continuous security monitoring

## Easily gain data from your sensors and devices and convert it into MQTT Sparkplug B protocol

Edge computing enables all of your devices in remotely located sites to process data at the edge of the network - meaning it can collect and process at those remotely located places you have operational assets without interruption - and only the most critical data (to you and your users) is then transmitted. This increases the speed of your data getting to the right people, at the right time.



With edge-based polling we can easily poll data from your sensors and devices connected to an 'Edge of Node' and convert it into MQTT Sparkplug B protocol, regardless of the native communication protocol of the sensors and devices without missing any data when your network may be down, and enabling you and your people access to deeper analytics, stronger optimization, with more troubleshooting, and increased compliance ease all while reducing bandwidth consumption.

Emerson's tireless pursuit of innovation drives us to combine superior quality measurement and analytical data technologies to provide you and your authorized users with accurate insight across your organization needed to operate efficiently, safely, and ready for the future.



# Security is everything

We understand the importance of data security for the sustainability of your business, and we don't take the trust you instill in us lightly. Your data is stored within a Relational Database Management System (RDBMS).

Web application communication is secured by TLS (Transport Layer Security). This delivers increased agility and improved awareness of network security threats by utilizing universal threat management layers. Device communications occur securely over VPNs (Virtual Private Networks) with our select communications partners, typically via IPSec (Internet Protocol Security).

Platform customer segregation is enforced within the data access layer of the software. The software is designed multi tenant from the ground up, and respects concepts such as individual tenants, tenant ownership of assets, data and authorized users. The API (Application Programming Interface) is web based, therefore is protected by our standard channel security system in place.



Microsoft invests over \$1 billion annually in cybersecurity, including the Azure platform, and employs over 3500 dedicated cybersecurity professionals.\*

## Securely realize your potential

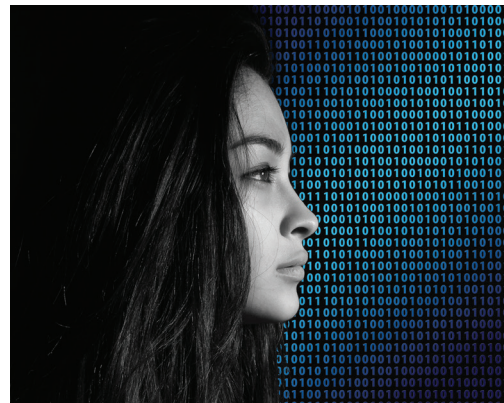


### Consistent Security Testing

Pentesting is cyberattack simulation that helps discover points of exploitation and test information technology security.

Independent pentesting & control reviews are performed weekly.

Emerson consistently performs internal pentesting at an ongoing, scheduled basis.



### Authorized Only Access

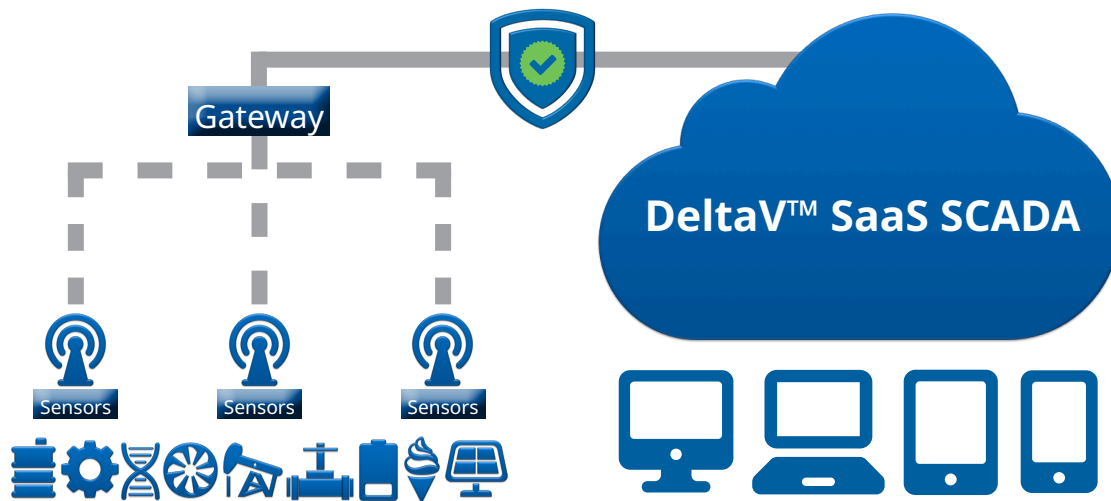
Create role based access with authorized approvals, including set groups that can easily be created to represent roles, and granted to select users.

Authorizations are granular, and split into two types:

- Functional Authorizations
  - Features, tools and interfaces
- Asset Authorizations
  - What you can see and change

\*<https://download.microsoft.com/download/1/6/0/160216AA-8445-480B-B60F-5C8EC8067FCA/WindowsAzure-SecurityPrivacyCompliance.pdf>

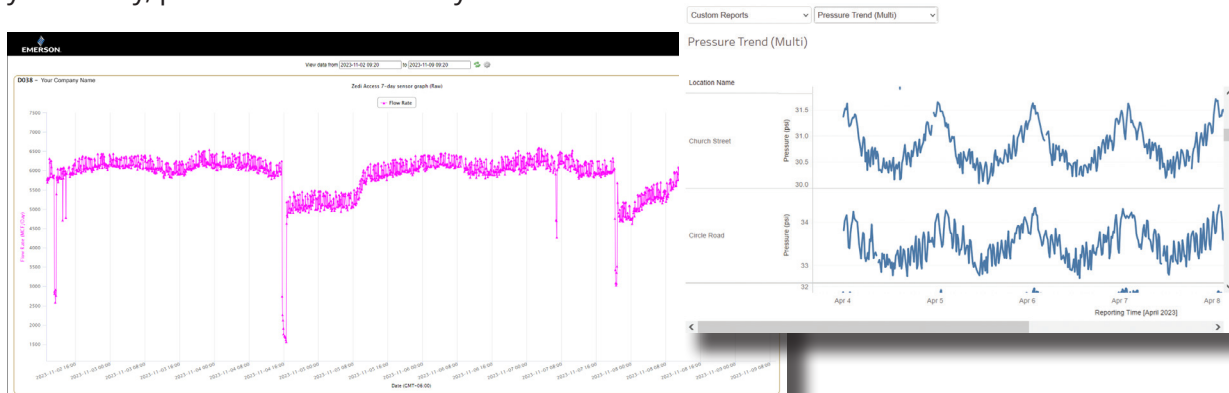
**Rapidly realize your operations potential through advanced cloud analytics, machine learning, AI and mobility.**



We simplify the connection between sensors to get you the data you need to make better business decisions. Emerson's DeltaV™ SaaS SCADA provides both a web interface to end users, as well as the ability to push data to third party platforms giving you accurate operation data, remote control, cry-out alarms and the mobility you need to increase your production, profits and sustainability.

## Unlock the most value from your operational data

SaaS SCADA for better performing assets, streamlined compliance, and optimized resources. Every aspect of our software suite is developed for ease of acquisition and management of your operational data, focused on delivering analytics and global mobility to meet regulatory compliance while increasing your safety, profits and sustainability.





# Software developed to triumph over your challenges



## **DeltaV SaaS SCADA**

Up-to-the-minute accurate data from your site all in a single source to actively see the information you decide is relevant to each person or role within your organization.

- Data trending, default & reporting
- 3rd party access & data exchange
- Continuous polling & optimization
- Alarm Management with call-outs
- Manage permissions & work-flows



## **DeltaV SaaS SCADA Mobile**

Enter, monitor and manage operational data anytime, anywhere with our mobile app. Available in Google Play as well as the App Store for all your mobile device needs.

- Input data & issue commands
- Prioritize work while in the field
- Eliminate field paperwork
- Push data to other systems or reports
- Immediately update systems



## **DeltaV SaaS SCADA Field Capture**

Capture daily production data in one, user-friendly platform. Gather and analyze manually entered, imported or updated data from various locations based on role.

- Easily view, edit & share data
- Analyze & export based on role
- Custom report engine
- Custom sort & display
- Advanced reporting



## **DeltaV SaaS SCADA available with Composition Management**

Cloud based sampling with a secure, single vault for all of your lab analyses results to streamline scheduling, approvals and notifications with end devices updated with lab results.

- Coordinate & monitor sampling
- Export lab sampling schedule
- Consolidate fluid analyses
- Automated approval thresholds
- Auto-update devices with approval



## **DeltaV SaaS SCADA available with Measurement Schematics**

Create measurement schematics for all facilities, manage all changes, track all revision history, and document reviews and approvals.

- Stay current on regulations
- Easy-to-use drag & drop drawing
- Link multiple schematics
- Always-on access to updated version
- Custom permission authorized users



## **DeltaV SaaS SCADA Asset Protect**

Streamline work for fixed assets, preventative maintenance & HSE. Control of equipment deployed, with documentation and records for compliance audits. Easy cloud-based fixed asset management.

- Track moves & location
- Pro-actively schedule work orders
- Set reminder & escalations
- Manage inventory & licenses
- Track incidents, specs & manuals

# Digitally transform your operations with increased visibility with a secure, scalable cloud-native IIoT platform.



**DeltaV™ SaaS SCADA is an IIoT cloud-native platform designed to enable asset-intensive industries to quickly and securely connect, acquire analytics and provide control of remotely located devices anywhere, anytime by anyone of your authorized users. We help our customers become more productive, profitable and sustainable to improve life around the globe.**

#### North America and Latin America

Global Headquarters  
Emerson Automation Solutions  
Remote Automation Solutions  
6005 Rogerdale Road  
Houston, TX, USA 77072  
T: +1 281 879 2699

#### Europe

Emerson Automation Solutions  
Remote Automation Solutions  
Unit 1, Waterfront Business Park  
Dudley Road, Drierley Hill  
Dudley, UK DY5 1LX  
T: +44 1384 487200

#### Middle East and Africa

Emerson Automation Solutions  
Remote Automation Solutions  
Emerson FZE  
PO Box 17033  
Jebel Ali Free Zone - South 2  
Dubai, UAE  
T: +971 4 8118100

#### Asia Pacific

Emerson Automation Solutions  
Remote Automation Solutions  
1 Panda Crescent  
Singapore 128461  
T: +65 6777 8211

[www.Emerson.com/DeltaVSaaS SCADA](http://www.Emerson.com/DeltaVSaaS SCADA)

**Go Boldly™**

© 2024 Emerson. All rights reserved.

The Emerson logo is a trademark and service mark of Emerson Electric Co. All other marks are the property of their respective owners. The contents of this publication are presented for information purposes only, and while every effort has been made to ensure their accuracy, they are not to be construed as warranties or guarantees, express or implied, regarding the products or services described herein or their use or applicability. All sales are governed by our terms and conditions, which are available on request. We reserve the right to modify or improve the design or specifications of our products at any time without notice. Responsibility for proper selection, use and maintenance of any product remains solely with the purchaser and end user.

**DELTA V™**

  
**EMERSON™**