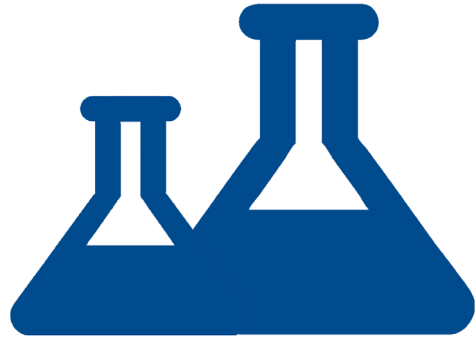


Zedi Composition Management

Cloud-based, highly automated, fluid analysis management software that saves you time and money with the data certainty you need.

Emerson's Zedi Composition Management is a web based sampling program with a secure, single vault for all of your lab analyses results, allowing you to streamline scheduling, approvals and notifications all while keeping end devices in the field updated with lab results to drive better decisions at every level of your organization.



Easily plan, coordinate, and monitor your sampling program

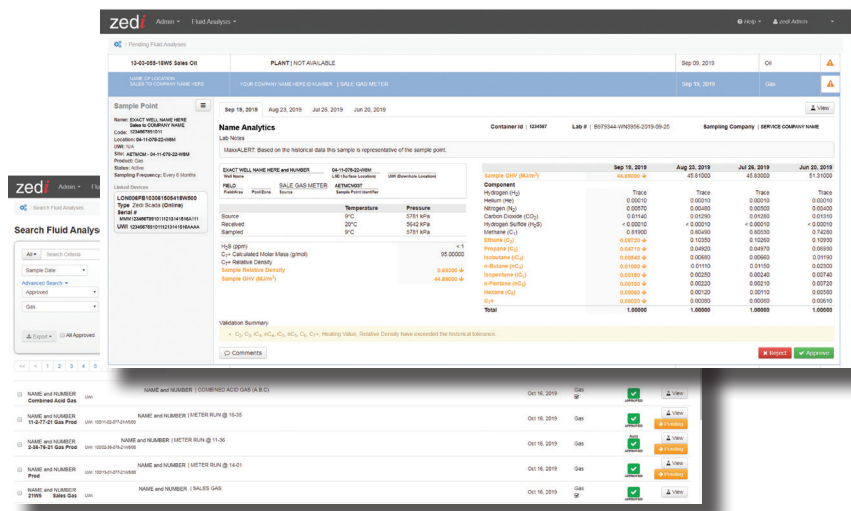
- Schedule and track sampling according to site requirements
- Quickly and easily arrange sampling services by exporting a sampling schedule and sending it to your lab

Quickly and easily find fluid analyses and know they are up-to-date

- Consolidates fluid analysis in a single repository available to an unlimited number of authorized users
- Accurate and timely fluid analysis data the moment it is published by your lab

Save time and keep field devices up-to-date

- Automatic approval of fluid analyses that meet user-defined validation criteria
- Immediately and automatically updates field devices and meters in Zedi TrueChart once approved



Call today for a demonstration

We're happy to set up a time that works for you to demonstrate the power of Zedi Composition Management to assist in your oil and gas production digital transformation.

Easily manage, plan and coordinate your gas and liquid composition analysis

Securely begin your oil and gas production digital transformation with our cloud based Zedi platform that's loaded with features and support.

Join the Journey

Expedite your digital transformation journey to an autonomous oil and gas operation with Emerson's Zedi Cloud SCADA Solutions. Our proven hardware and software, backed by our team for answers to every producers need for stronger, long term returns provide scalable solutions to fit your project size, and growth while increasing the reliability of your assets with improved focus on health, safety and environment.

Manage and optimize remotely to drive digital transformation in your operation

- Complete, clear data
- Easily set smart alarms
- Predictive intelligence
- Self correcting optimization
- Continuously modulated control
- Exception based safety systems
- Zedi Access software
- Zedi Go mobile app
- 24/7/365 Customer Care

North America and Latin America

Global Headquarters
Emerson Automation Solutions
Remote Automation Solutions
6005 Rogerdale Road
Houston, TX, USA 77072
T: +1 281 879 2699

Europe

Emerson Automation Solutions
Remote Automation Solutions
Unit 1, Waterfront Business Park
Dudley Road, Drierley Hill
Dudley, UK DY5 1LX
T: +44 1384 487200





Middle East and Africa

Emerson Automation Solutions
Remote Automation Solutions
Emerson FZE
PO Box 17033
Jebel Ali Free Zone - South 2
Dubai, UAE
T: +971 4 8118100

Asia Pacific

Emerson Automation Solutions
Remote Automation Solutions
1 Panda Crescent
Singapore 128461
T: +65 6777 8211

www.Emerson.com/ZediCloudSCADA

-  Facebook/Emerson-Automation-Solutions
-  Remote Automation Solutions Community
-  @Emerson_RAS
-  Remote Automation Solutions

© 2021 Emerson. All rights reserved.

The Emerson logo is a trademark and service mark of Emerson Electric Co. All other marks are the property of their respective owners. The contents of this publication are presented for information purposes only, and while every effort has been made to ensure their accuracy, they are not to be construed as warranties or guarantees, express or implied, regarding the products or services described herein or their use or applicability. All sales are governed by our terms and conditions, which are available on request. We reserve the right to modify or improve the design or specifications of our products at any time without notice. Responsibility for proper selection, use and maintenance of any product remains solely with the purchaser and end user.



CONSIDER IT SOLVED™