

☛ Zedi is Now DeltaV SaaS SCADA

New Enhanced Map Experience in DeltaV™ SaaS SCADA

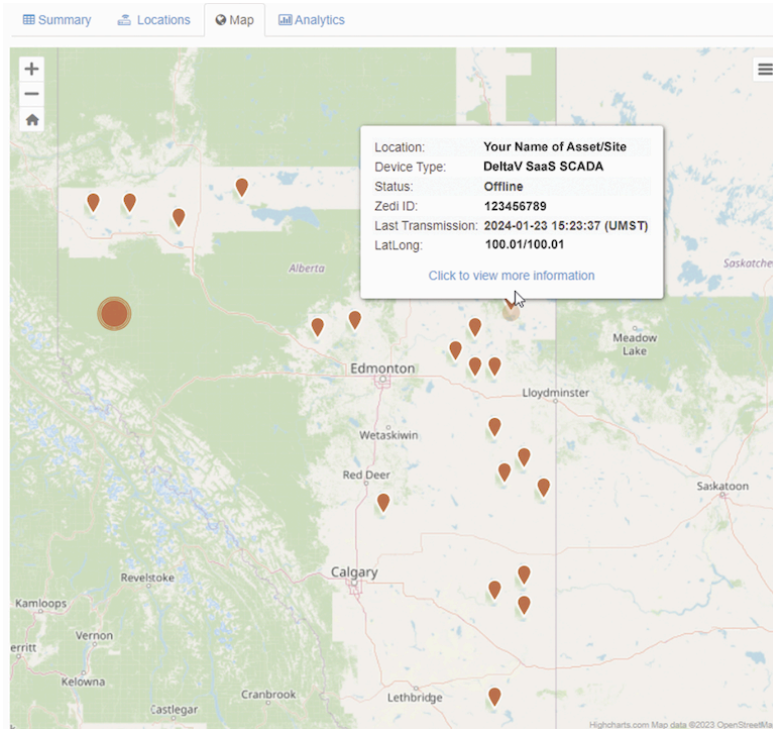
As part of our commitment to enhance your experience, we're upgrading to a new map experience that will deliver faster load times, and cleaner, clearer map views.

What to Expect:

Seamless Transition: Our team is working diligently to ensure a smooth transition. You won't experience any disruption in your analytics or workflows.

Functionality: All functions of the new mapping is the same, you will experience new visuals without losing any existing functionality.

Increase Speed and Graphic improvement: You should experience a better, faster map load time to visualize any of your maps with cleaner, clearer non-satellite view.



Next Steps:

You will notice an updated map experience integrated into DeltaV SaaS SCADA. We're confident that this upgrade will enhance your data visualization experience with added speed and a better user experience to empower better decision-making.

We appreciate your continued trust in our platform. Should you have any questions, comments or feedback please contact DeltaV SaaS SCADA Support at 866 732 6967.

View Locations:

View your marked locations by simply selecting them in the location tree.

Zoom in and out on any map by simply clicking on the '+' or the '-' icons on the map.

Frequently Asked Questions

Q: What's changing in the maps experience?

We're upgrading to a new maps experience and you'll notice improved visuals, and faster loading speed without losing any existing functionality or impact to your workflows.

Q: Will there be any disruption during the transition?

No, our team is ensuring a seamless transition. Your analytics and workflows won't be affected.

Q: Can I change back to the satellite map view?

No, the satellite view will be discontinued

Q: Can I provide feedback or report issues?

Absolutely! If you have suggestions or encounter any issues, please contact Support at 866 732 6967

Q: How will this upgrade enhance my experience?

You will experience improved responsiveness and speed when interacting with maps.